

AMANGANI

WINTER EXPLORER'S GUIDE

Amangani is located in the southern half of the Greater Yellowstone Ecosystem – a huge expanse of Mountains, meadows, wilderness, sage flats, streams and rivers. Contained within these vast ecosystems are national forests, wildlife refuges and Grand Teton and Yellowstone National Parks. In winter, Jackson Hole is transformed into a surreal winter



wonderland. Abundant snowfall blankets the valley creating a natural playground. Though some animals hibernate for the winter, bison, elk, moose, mule deer, and wolves descend into the valley seeking food and shelter from the long Wyoming winter. With the animals in such close proximity, wildlife encounters and viewing opportunities abound. Activities are virtually unlimited within this rich and varied ecosystem. We have created a series of excursions for you to explore Jackson Hole and this magical environment. These are offered in conjunction with the most professional outfitters in the area. Please note that many activities can also be offered on a private basis and sometimes include a picnic or boxed lunch. Alternatively, picnic lunches can be arranged through the Grill at Amangani.

For more information on any of the excursions, including outdoor gear, clothing and vendor services, please contact a Guest Manager at 877-734-7333 or via email at amanganiactivities@amanresorts.com.



We hope you enjoy exploring Jackson Hole.

ALPINE SKIING AND SNOWBOARDING AT JACKSON HOLE MOUNTAIN RESORT

Late November to Early April

Located in the alpine community of Teton Village, the Jackson Hole ski area covers a vast range of terrain offering more than 2,500 skiable acres.

Teton Village is located 25 minutes from Amangani and offers shops, restaurants, bars and a myriad of recreational activities. The combination of one of the greatest lift-serviced vertical drops in North America (4,139 feet) and an average annual snowfall of over 500 inches provide you with some of the best skiing and snowboarding anywhere in the world.

Twelve lifts, including a gondola and the new 100 passenger aerial tram, offer diversity and unparalleled access. Warm drinks, snacks and a comfortable private place to rest await you in the Amangani Ski Lounge, located at the base of the Bridger Gondola. We provide complimentary ski shuttles to and from the resort scheduled throughout the day. Private transportation is also available to Teton Village. Kindly contact a Guest Manager to arrange for this service. Advance notice is highly recommended for reserving private instructors and alpine guides.



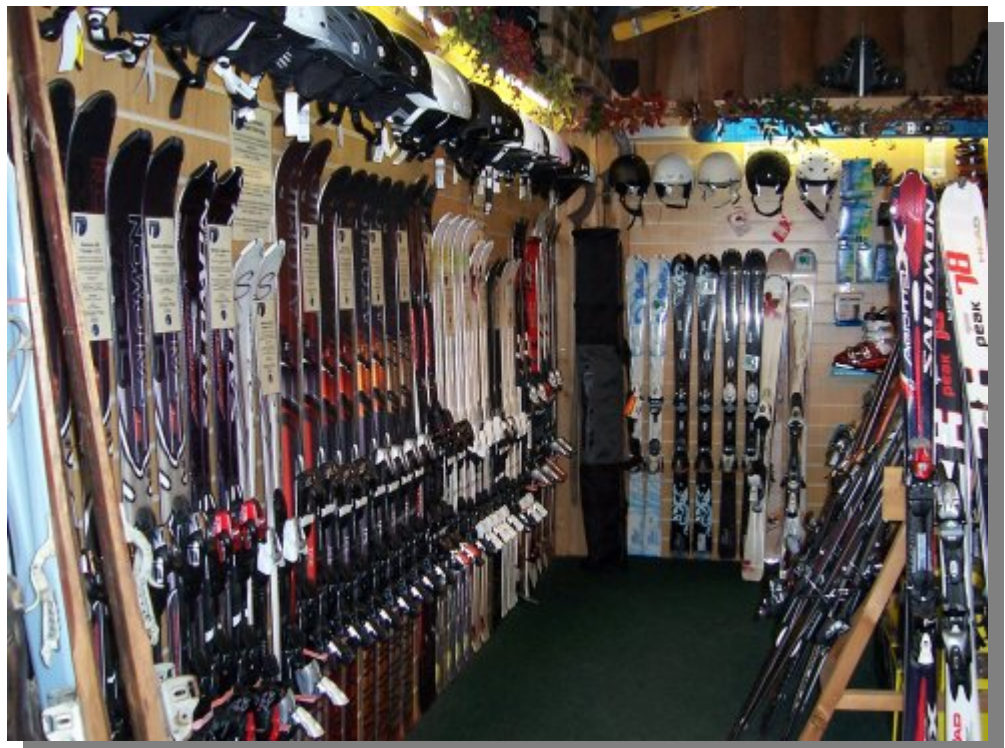
SKI & SNOWBOARD RENTALS WITH DOOR 2 DOOR *at the Amangani Library*



Why wait amongst the crowds inside busy ski shops or delay your skiing by renting your skis at the mountain? Door 2 Door guarantees the largest selection of skis and snowboards in the industry. All ski packages feature high performance boots that cater to all ability levels. The preferred company of Amangani, Door 2 Door offers quality equipment with personalized service. Let Door 2 Door ski and snowboard rentals come to you at your convenience.

Door 2 Door will assist you in selecting the right equipment for you based on your elected skier ability.

- Type I—Ski Cautiously**
- Type II—Ski Moderately**
- Type III—Ski Aggressively**



ALPINE SKIING AND SNOWBOARDING AT SNOW KING RESORT

Late November to Late March



Founded in 1939 as Wyoming's first ski area and boasting North America's steepest trail top to bottom, Snow King is the locals' favorite. It offers a full service resort within a 15-minute drive from Amangani. With a terrain park, a snow tube park, an ice rink and a ski school, Snow King has it all, including night skiing. On-site ski and skate rentals at the Snow King Center are also available right at the base of the mountain. With consistent terrain and a near-perfect fall line, Snow King is the economical choice

for skiers of all abilities and a fabulous resort with the focus on family and fun. Please approach a Guest Manager to arrange private transportation.

ALPINE SKIING AND SNOWBOARDING AT GRAND TARGHEE RESORT

Late November to Early April



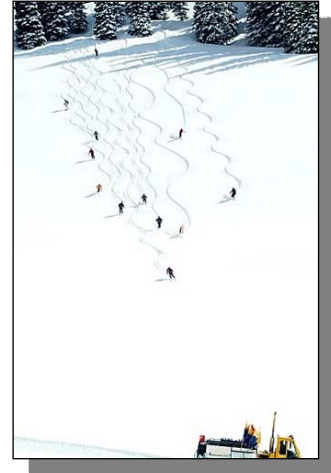
Grand Targhee Ski Resort offers some of the most consistent powder skiing in the world. With 3,000 acres of lift-served and Snow Cat accessible terrain and an average annual snowfall exceeding 500 inches, the conditions are unrivaled. Considered one of the most diverse ski areas in the United States, it is a mountain perfectly suited for all ability levels. This

resort presents a serene atmosphere with minimal lift-lines, spacious slopes and small shops and restaurants to serve your needs. Located 85 minutes from Amangani, depending on road conditions, Grand Targhee could be your key to finding deep powder. Alltrans Transportation provides a shuttle service from the Town of Jackson to Grand Targhee. Please contact a Guest Manager for Reservations.

SNOW CAT POWDER SKIING AT GRAND TARGHEE RESORT

December to April

Picture yourself venturing out to Peaked Mountain where thigh-high powder is reserved exclusively for Snow Cat powder skiers. Skiing on a mountain with 2,400 feet of vertical terrain is amazing. Be prepared to have an incredible day in some of the best powder in the world. Expect eight to ten runs per day, which can mean up to 20,000 vertical feet of incredible Rocky Mountain "highs." This is one of the best skiing adventures available in North America. Advance notice is highly recommended for reserving your Snow Cat experience.



HELI-SKIING

December to April



Escape the crowds and ski the pristine faces and bowls of the Snake River, Hoback, Palisades and South Teton Mountain Ranges via helicopter. High Mountain Heli-Skiing offers low client-to-guide ratios which will enhance your skiing experience. The new Bell 407 helicopter will be your lift as you explore the magnificent mountains that rim the valley. A day with High Mountain Heli-Skiing will give you access to some of the most exhilarating mountains in the West. While other skiers are experiencing tracked-up snow, you will be skiing run after run of fresh untracked powder. Your trip will include lunch and plenty of powder, consisting of at least 6 runs and more than 13,000 vertical feet of skiing. Advance notice is highly recommended.

Escape the crowds and ski the pristine faces and bowls of the Snake River, Hoback, Palisades and South Teton Mountain Ranges via helicopter. High Mountain Heli-Skiing offers low client-to-guide ratios which will enhance your skiing experience. The new Bell 407 helicopter will be your lift



CROSS COUNTRY SKIING

December to April



Nordic skiing provides you with access to some of the most beautiful and picturesque areas of Jackson Hole. Closer to home, there are a number of Nordic Centers located in the valley offering miles of impeccably groomed terrain for all ability levels. For the more adventurous, there are a number of companies providing a full range of trips, or we can suggest some of our favorite places so you can venture out on your own.



The valley's Nordic Centers offer a variety of terrain on which you can hone your skills or take a leisurely ski. Their expert instructors can provide quick tips for those more experienced or help the novice get introduced to this great winter sport. Nordic Centers are located at Teton Pines, Jackson Hole Mountain Resort, Grand Targhee Ski Resort, and in Wilson.

The Grand Teton National Park is a mere 30-minute drive from Amangani, offering access is quick and easy access. Winter in the park brings solitude, with the Tetons providing a stunning backdrop to your skiing experience. Full and half day guided trips are available, or we can direct you to the trailheads that will lead you to dramatic vistas.

DOG SLED TOURS

December to April

A dog sled tour is perhaps the best way to see the beautiful scenery of Jackson Hole. During a fantastic trip through Bridger-Teton or Targhee National Forests the only sounds you will hear are the “shushing” of the runners, the panting of the dogs and the wind in your face. Before departing on your adventure you might journey to the kennels to meet the dogs and a musher who will be your guide. You may even have an opportunity to drive the sled yourself – a truly unforgettable experience. Dog sled tours are available on both a full-day and half-day basis.



Continental Divide Trail

Travel by dog sled to a nomadic wilderness dwelling, located on the Continental Divide through the Wind River Range near Grand Teton National Park. Sip on hot cocoa and schnapps after a morning of dog sledding through the western slopes of the Teton Range, passing Rick’s Basin along a ridge route. Experience the solitude and majesty of the quiet side of the Tetons.



Granite Hot Springs Trail

Spend a full day on the trail with the pups, stopping at the 105-degree Granite Hot Springs for a swim while your guide cooks steak and trout over an open fire. Half-day trips along the same trail without swimming at the spring are also available.



ICE SKATING

November to April



Ice skating is a great activity for families or anyone looking for an activity to do away from the slopes. The valley has a number of outdoor skating rinks available to the public as well as one indoor rink. One can free skate or many of the rinks have “stick and puck” times available as well.

Outdoor Rinks— these rinks are open daily and have fluctuating schedules, so inquire about the various time slots upon arrival. A few of these rinks provide rentals of skates on site.

Indoor Rink— Located at the base of Snow King Resort, the Snow King Center provides the valley’s only indoor rink. The schedule fluctuates throughout the winter season; please inquire about times upon arrival. There is a skate rental shop on site as well.

SLEIGH RIDES

December to March (Conditions permitting)

Taking a ride on a horse-drawn sleigh is a spectacular way to enjoy the local scenery in a quiet, relaxed environment, especially under the twilight of a full moon. Amangani can arrange for various sleigh rides to suit your desires and tastes.

Take a ride into the National Elk Refuge, winter home to more than 10,000 elk that migrate from the mountains to the refuge as the season changes. Your guide will provide insight into the lives and habits of these great animals as you are carried across the expansive refuge under the warmth of a wool blanket. Or, try combining dinner with a



scenic sleigh ride. Close to home, a horse-drawn sleigh at Spring Creek Ranch is ready to carry you along the ridge line of the East Gros Ventre Butte, where cascading shadows of the Tetons linger in the half-light of the moon. Return to enjoy an elegant dinner at The Grill at Amangani.

NATIONAL MUSEUM OF WILDLIFE

All Year

An innovative design, the museum's sandstone building overlooks the National Elk Refuge and brings together more than 3,000 works of art from the early 19th century to the present. The museum features twelve exhibition galleries showcasing a permanent collection of wildlife art. Highlights include the nation's largest collection of works by wildlife master artist Carl Rungius, the art and artifacts of John Clymer and a Children's Discovery Galley. Rotating installations from nationally recognized museums are also on display. Visiting the museum and having lunch at its Rising Sage Cafe is a wonderful way to spend an afternoon.

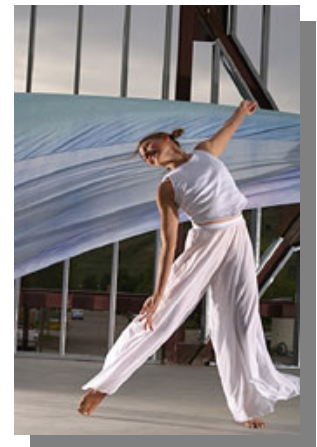


THE CENTER OF THE ARTS

All year



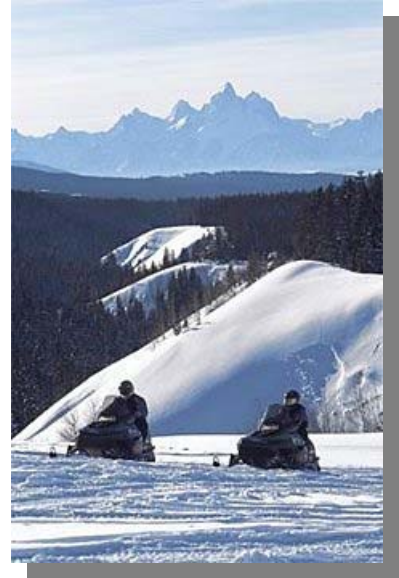
The newly constructed Center for the Arts is home to many local arts organizations, educational activities and other community gatherings. The Center houses a state of the art Performing Arts Pavilion, which includes a 500-seat theater and a Music Center. They offer a wide spectrum of events such as theater productions, musical concerts, and films, as well as, art talks, openings and exhibits. Also, the Off Square Theatre Company, a vibrant professional theatre company, is based at the Center for the Arts. Off Square produces and presents quality theatre year-round. This exciting new venue brings nationally and internationally acclaimed talent to Jackson Hole. Instructors from the Dancer's Workshop also provide excellent dance education and fitness classes open to the public. Your Guest Manager can provide you with the Center's current schedule.



SNOWMOBILING

December to April

Are you looking to get away and take in some breathtaking winter scenery in Wyoming's expansive backcountry? You don't need to be a skier to experience all that the area has to offer. Snowmobiling is an exciting way to travel through the wilderness during the winter months, and it can take you places you never thought imaginable. Jackson Hole has several companies providing a variety of full-day and half-day journeys, complete with professional guides and new snowmobiles from the industry's leading companies. Here is just a sampling of trips offered by our vendors:



Bill Webb's Camp



One of our personal favorites, this trip will take you through the pristine wilderness of the Bridger-Teton National Forest to an old trapper's cabin. Relax in the sauna and eat lunch or a snack in the camp's teepee. You have the choice of a full or half-day trip to suit your needs.

Yellowstone-Grand Canyon

Leave early in the morning and embark on a 120+ mile, full-day journey through Yellowstone, stopping along the way at Fishing Bridge, Mud Volcano and Dragon's Mouth before reaching the canyon. Witness the incredible view of the Absaroka Mountains to the north, and enjoy lunch at one of the lookout points or in a warming hut along the trail.



Yellowstone-Old Faithful

An Old Faithful journey is another full-day snowmobiling activity. Covering nearly 100 miles roundtrip, you will experience the beauty and wonder of Yellowstone, stopping by the park's most famous geyser for lunch. This trip also includes scenic stops along the way at Kepler Cascades and the Continental Divide.

Granite Hot Springs

This is one of the more popular snowmobile tours in Teton County. Leave around 8 am and go south of Jackson with your guide about 25 miles to the trailhead. After a short but scenic snowmobile ride to the hot springs, relax in the 105-degree water while your guide prepares lunch. The afternoon will be filled with off-trail riding in open meadows.



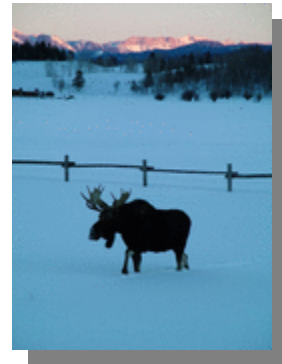
Togwotee Pass/Brooks Lake



One of the area's most beautiful and rugged mountain areas, Togwotee Pass lies 40 miles north of Jackson and is renowned for its deep powder caches. Enjoy incredible scenery as you ride both on and off-trail. You can eat lunch along the trail or at Brooks Lake Lodge, a secluded backcountry lodge, surrounded by the Pinnacle Buttes.

Gros Ventre Wilderness

With only a few companies venturing onto the maintained trails throughout Bridger-Teton National Forest, this trip can be a great substitute to a Yellowstone trip and can offer abundant wildlife and scenery. Just a short drive from Amangani, the Gros Ventre trail provides close and easy access.



Greys River

Follow this winding river to wide-open spaces, such as McCain Meadows and Blind Bull, where you're free to roam and explore with your guide. With incredible scenery and less traffic on the trails, this is another excellent trip to take in the quiet beauty of the Wyoming Range located south of Jackson.

SNOWSHOE EXPERIENCE

December to April

Snowshoeing is an intimate and unique way to explore the vast wilderness of the Jackson Hole valley. A guide service offers both half-day and full-day tours into a wide range of pristine backcountry areas that yield unprecedented opportunities for wildlife viewing, exploring the natural environment and appreciating the breathtaking views of the Teton, Gros Ventre and Wind River Ranges.



Your naturalist guide will educate you on winter ecology, interpreting animal tracks and the geological history of the mountain ranges. Should you desire an in-depth explanation and commentary, an easy-to-understand overview or a silent appreciation of the scenery and wildlife, the choice is entirely yours. Another alternative for the independent adventurer is to let us direct you to the trails and assist you in planning your snowshoeing excursion. We can get you to the rental shop and on the trail in no time. With Grand Teton National Park a mere 30-minute drive from Amangani, access is quick and easy.

WILDLIFE VIEWING TRIPS

All year

As the snow piles up at higher elevations, animals such as elk and mule deer migrate to the valley floor and make themselves visible to humans for the first time in several months. Amangani can arrange for a private wildlife tour with a knowledgeable guide in a variety of settings. The south entrance to Yellowstone National



Park and the western access road for Grand Teton National Park are closed in the winter to automobile traffic. Despite the road closings, several companies in the area have special permits to operate snow coach tours, which is one of the few methods of entering the parks during the winter.



SNOWCOACH TRIPS

December to Early March

For those who prefer a tour in heated, comfortable transportation, a snowcoach is the ideal means of travel throughout Yellowstone National Park's winter wonderland. You will have a clear view while moving easily across the snow and listening to the insights of an experienced Yellowstone guide. Snowcoaches are perfect for families, especially the youngsters and oldsters! Leave the driving to our professional snowcoach drivers.

Trips to Biscuit Basin and Old Faithful are available via snow coach, and there is usually plenty of wildlife to be seen along the way.



AMANGANI ACTIVITIES PRICE SHEET WINTER 2010/11

*Please note that prices may vary during peak times of the season and may not run on HOLIDAY DATES. Prices below are group rates unless otherwise specified as PRIVATE.

PRIVATE SKI LESSON AT JACKSON HOLE MOUNTAIN RESORT

	Full-day (9:00am-4:00pm)	Half-day AM (9:00am-12:00pm)	Half-day PM (1:00pm-4:00pm)
Private ski/board rates	\$620*	\$515*	\$380*
Private early Gondola	\$645** [8:30-3:30]	\$515** [8:30-12:30]	N/A
Private early Tram <i>experienced riders only</i>	\$645*** [8:30-3:30]	\$515*** [8:30-12:30]	N/A

*Private lesson rates are per 1-5 people per group

**\$15 per person early gondola reservation fee for 2nd - 5th group members

***\$25 per person early tram reservation fee for 2nd - 5th group members

DOOR 2 DOOR RENTALS

Demo Package	\$60.95
Demo Skis Only	\$56.95
High Performance	\$50.95
High Performance Skis Only	\$46.95
Sport Package	\$40.95
Sport Skis Only	\$36.95
Kids Performance	\$30.95
Kids skis only	\$26.95
Demo Snowboard	\$55.95
High Performance Snowboard	\$42.95
Kids Snowboard	\$30.95
Helmet	\$ 8.00

* \$2.00 PER DAY INSURANCE WAIVER INCLUDED IN COST OF RENTAL

NIGHT SKIING AND TUBING AT SNOW KING

Tuesday through Saturday 4-7pm

- Adult Night Ski: \$10
- Junior/Senior Night Ski: \$7
- Adult 1 hour tube \$16
- Adult 2 hour tube \$21
- Child Tube 1 hour (13yrs Under) \$13
- Child Tube 2 hours \$18

CAT SKIING AT TARGHEE RESORT

- Full Day (9am-4pm) \$TBD (Includes hot beverages, snacks and lunch)
- Half Day (1pm-4pm) \$TBD (Includes snacks and beverages)

HELI-SKIING

- Adult \$1,050 per person per day (for 6 runs)
- Additional Runs \$95 per run

CROSS COUNTRY SKIING

**Please note that these activities exclude rentals*

Half-Day Explorer Private (8-12pm or 1-5pm)

- 1-2 persons \$375
- Additional Persons \$55 each
- Park Entrance \$5 per person

Full Day Trekker Private (8am-3pm)

- 1-2 persons \$475
- Additional Persons \$75 each
- Park Entrance \$5 per person

JHMR Saddlehorn Activity Nordic Center (8:30am-4:30pm)

* 17km of professionally groomed track

- 1 hour Private Lesson \$85 per person
- 2 hour Private Lesson \$135 per person
- 3 hour Private Lesson \$185 per person

Teton Pines Country Club

*14km of machine groomed trails over rolling hills

- 1 hour Private Lesson \$50 per person
- 1 hour Private Lesson \$80 per 1-2 persons

DOG SLEDDING TOURS

- Full Day Tours \$270 to \$295 per person
- Half Day Tours \$180 to \$230 per person

SLEIGH RIDES

Elk Refuge (10am-4pm Daily; 1 hour trip)

- Adults \$18 per person
- Children (5-12yrs) \$14 per person
- Children (5 & Under) Free
- Private Sleigh (16-18 people max) \$330

Sleigh Rides at Spring Creek Stables Daily (1 hour evening trips)

- Private sleigh ride 1-9pax \$390 (excluding gratuity)
- Group sleigh ride only \$39 per person (excluding gratuity)

Sleigh Rides along the Snake River to Private Teepee Camp

- Private hot chocolate sleigh ride \$792 1-6pax, \$75 additional (3.5 hrs)
- Private mid-day sleigh ride w/lunch \$1,386 1-6pax, \$125 additional (4 hrs)
- Private cocktail & appetizer sleigh ride \$1,386 1-6pax, \$100 additional (3.5 hrs)
- Private dinner sleigh ride \$1,716 1-6 pax, \$185 additional (4.5 hrs)
- All prices include 12% land fee and gratuity
- Transportation additional \$50 1-2 pax and \$20 each additional person

SNOWMOBILING TOURS

Old Faithful Geyser Yellowstone Park (Full-day)

- Driver \$249 to \$300 per person
- Rider \$139 to \$149 per person

Grand Canyon Yellowstone Park (Full-day)

- Driver \$249 to \$325 per person
- Rider \$139 to \$149 per person

Granite Hot Springs (Full-day)

- Driver \$220 to \$240 per person
- Rider \$100 to \$130 per person

Granite Hot Springs (Half-day)

- Driver \$189 to \$229 per person
- Rider \$100 to \$120 Per person

Togwotee Pass (Full-day)

- Driver \$220 to \$250 per person
- Rider NOT RECOMMENDED

Continental Divide/Brooks Lake (Full-day)

- Driver \$220 to \$269 per person
- Rider \$120 to \$130 per person

Gros Ventres Wilderness (Full-day)

- Driver \$229 to \$269 per person
- Rider \$100 to \$120 per person

Gros Ventres Wilderness (Half-day)

- Driver \$189 to \$219 per person
- Rider \$100 to \$120 per person

Greys River (Full-day)

- Driver \$220 to \$240 per person
- Rider \$120 to \$140 per person

****GROUP TOURS TAKE UP TO 12 SLEDS. PLEASE NOTE THAT PRIVATE SNOWMOBILE TOURS ARE AVAILABLE. PLEASE SEE GUEST MANAGER FOR PRICES.**

SNOWSHOEING ADVENTURES

Half-day Explorer Private (8-12pm or 1-5pm)

- 1-2 persons \$375
- Additional Persons \$55 each
- Park Entrance \$5 per person

Full-day Trekker Private (8am to 3pm)

- 1-2 persons \$475
- Additional Persons \$75 each
- Park Entrance \$5 per person

Private Snowshoe along the Snake River

- Snowshoe tour \$198 1-2pax, \$75 additional (1 hr)
- Wildlife snowshoe adventure \$448.80 1-3pax, \$95 additional (2-4hrs)
- Wildlife snowshoe w/lunch at teepee \$990 1-5pax, \$140 additional (4-5 hrs)
- Wildlife snowshoe w/dinner at teepee \$1,320 1-5pax, \$180 additional (4-5 hrs)
- All prices include 12% land fee and gratuity
- Transportation is additional \$50 1-2 pax and \$20 each additional person

PRIVATE WILDLIFE VIEWING TRIPS

- Grand Teton half-day winter dawn/sunset tour \$400-\$500 1-4 pax
- Grand Teton full-day wildlife discovery tour \$600-\$800 1-4 pax
- Grand Teton full-day wildlife art and sleigh tour \$600-\$800 1-4 pax

SNOWCOACH TOURS

- Yellowstone National Park group tour \$265-\$300 per person
- Yellowstone National Park private tour \$1,900-\$2,700

***Please note that activities do not include gratuities (unless specified) and cancellation policies do apply. Please pay special attention to these when booking.*

Wishing you a wonderful winter vacation here at Amangani and in beautiful Jackson Hole, Wyoming!

